



# Video Calibration Report

---

<b>Company:</b>	CALIBRADOR: M. RONDA	<b>Email:</b>	calibracionprofesional@hotmail.cc
<b>URL:</b>	www.chromapure.com	<b>Test Pattern Source:</b>	Built In
<b>Color Analyzer:</b>	Display 3 Pro II	<b>Reference Gamut:</b>	Rec. 709
<b>Calibration Date:</b>	4/30/2021 7:49 PM	<b>Target Gamma:</b>	2.22
		<b>Color Intensity:</b>	100%

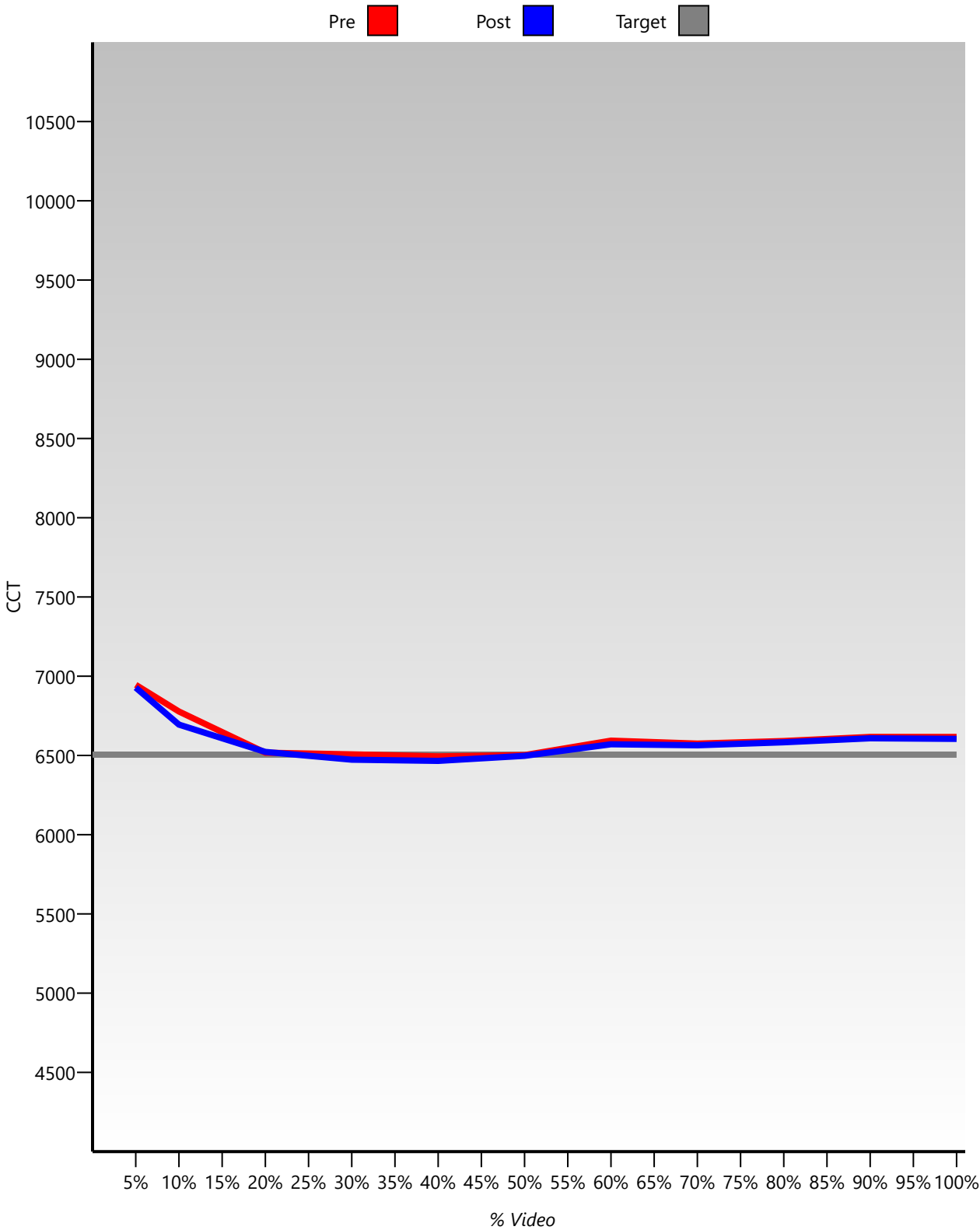
---

## Client Information

<b>Name:</b>	NOSOLOHD
<b>Display:</b>	PANASONIC 55GZ960
<b>Address:</b>	THX CINEMA
<b>Phone:</b>	
<b>Email:</b>	calibracionprofesional@hotmail.com

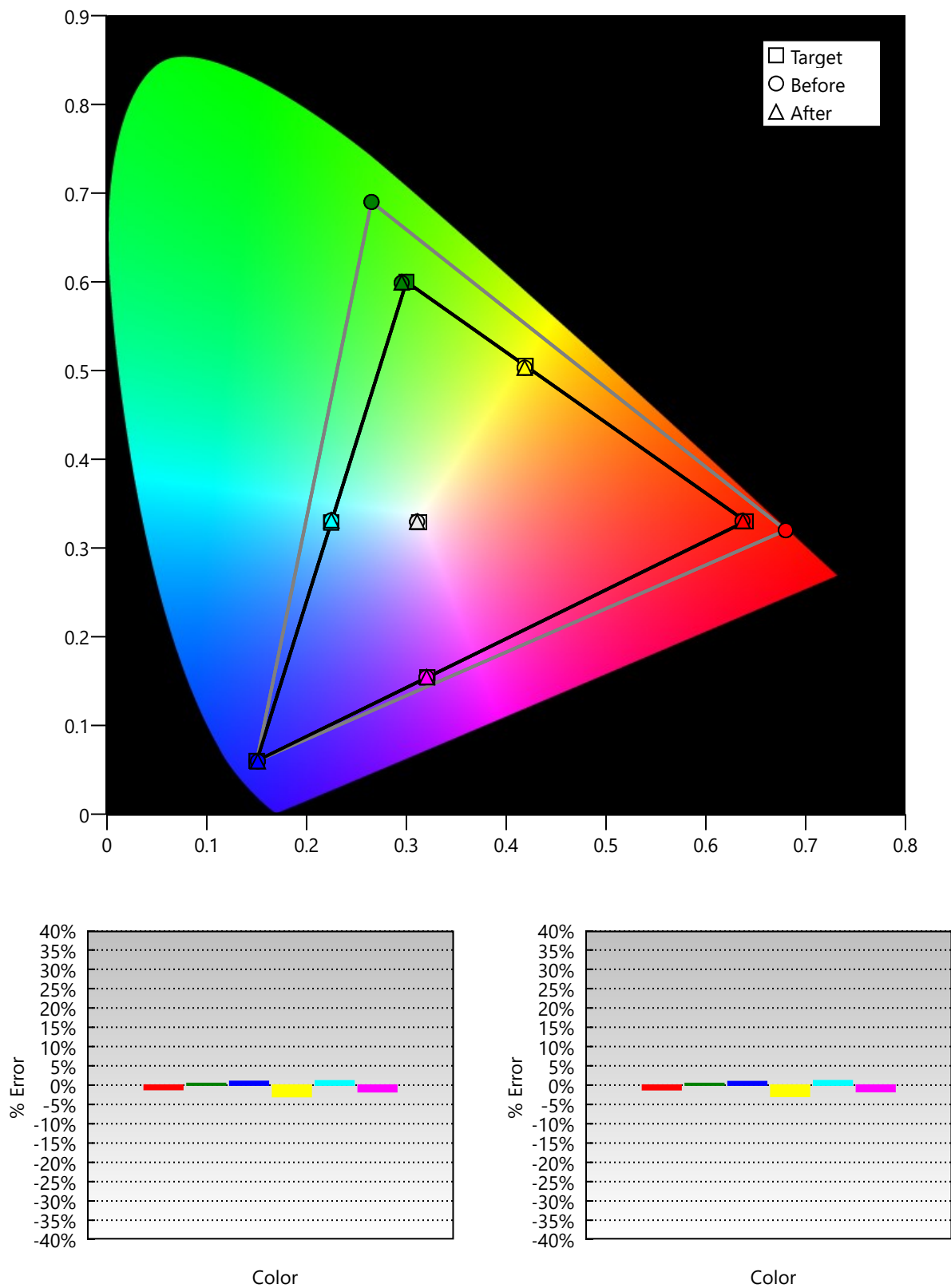
# Correlated Color Temperature

Correlated Color Temperature (CCT) is a less precise measurement of the color of white. The target is 6505. Higher than 6505 is too blue. Lower is too red.

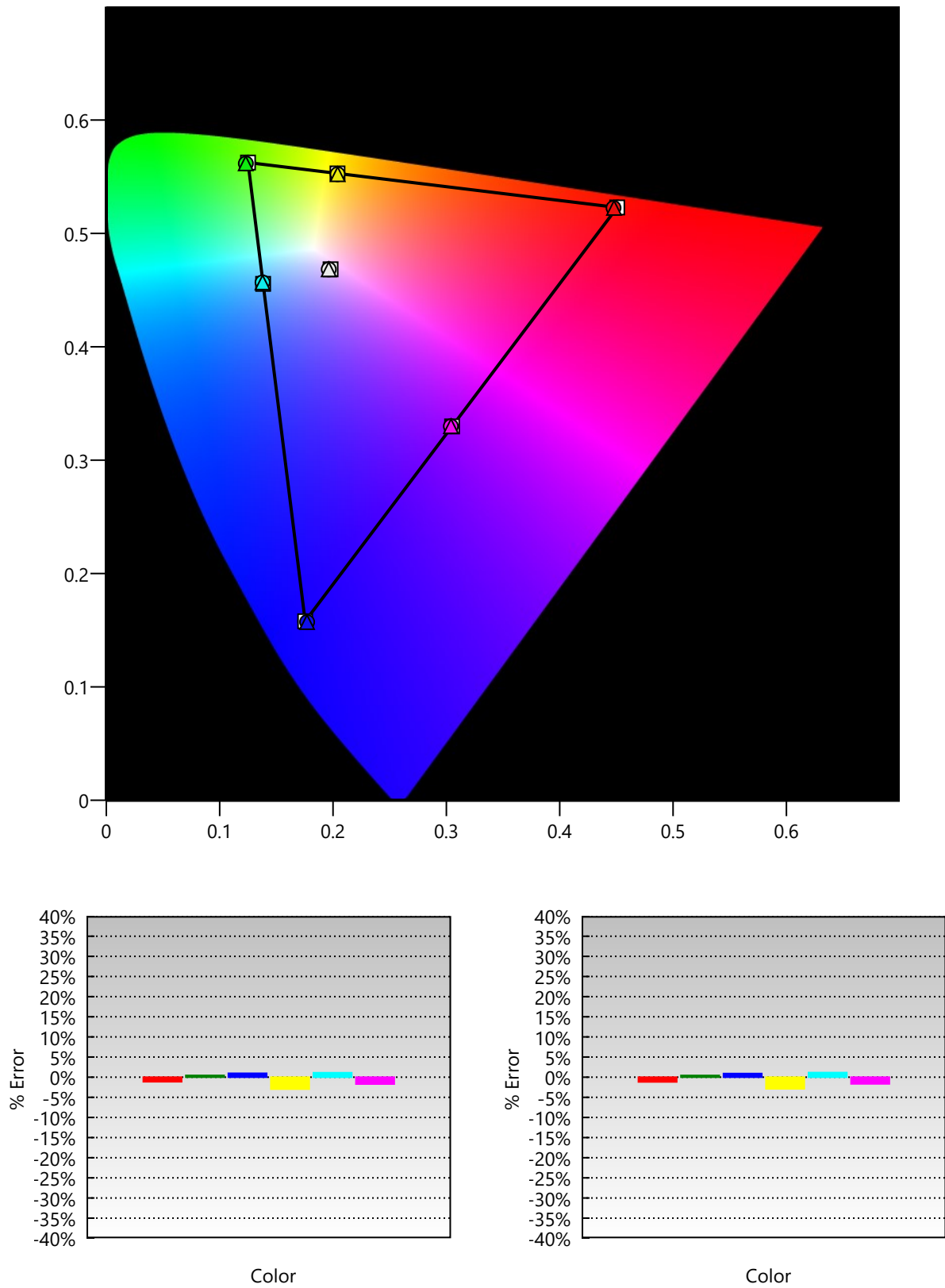


# CIE Charts

These charts graphically map the accuracy of the display's color saturation and hue relative to the chosen standard. The closer the 'After' symbols are to the reference points, the more accurate the color. There are 2 chromaticity charts, one showing before/after performance based on the 1931 xy system and another based on the 1976 u'v' system, which is less well known, but more perceptually uniform.

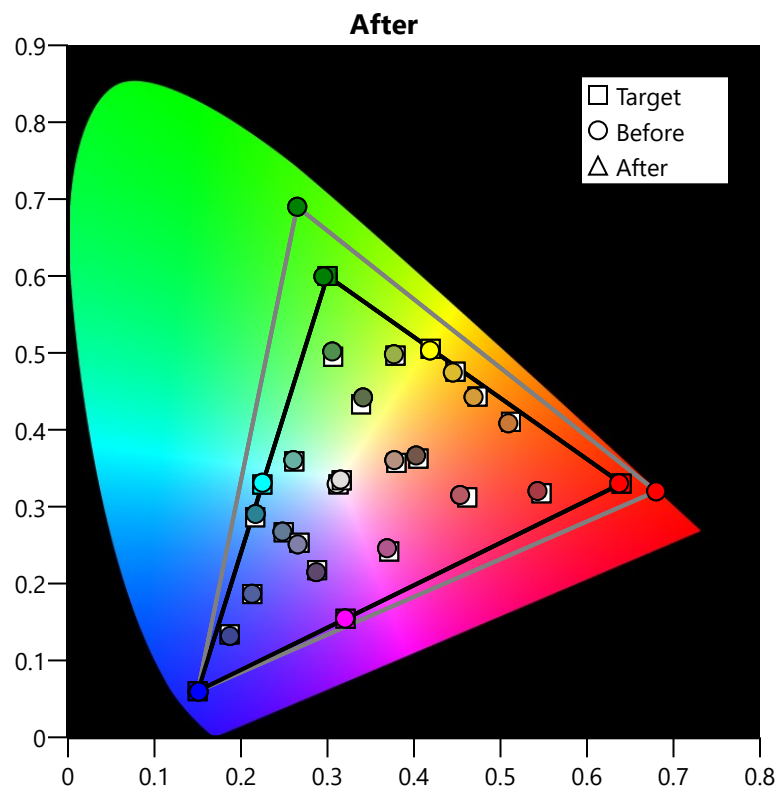
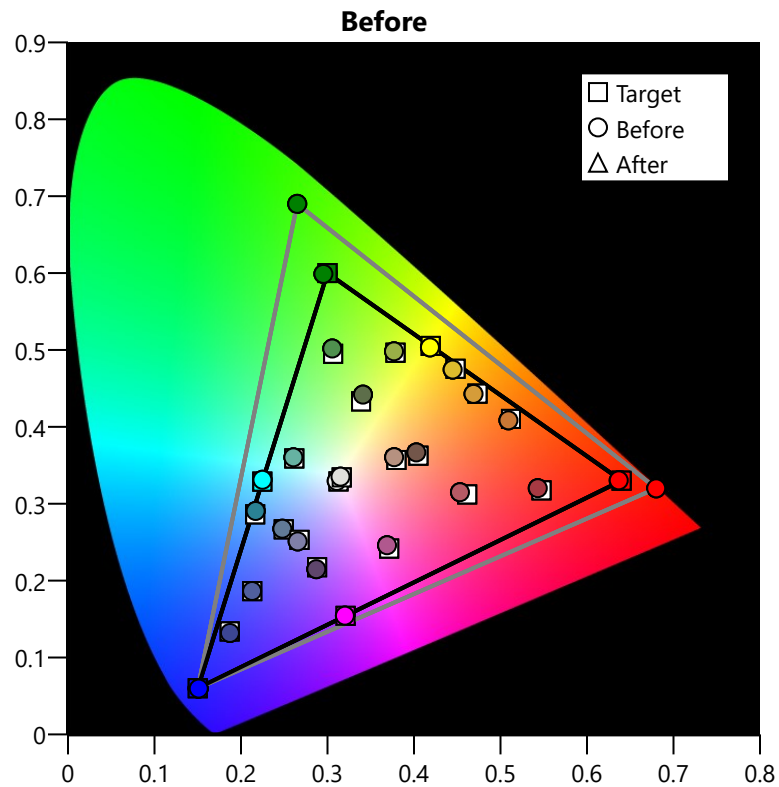


CIE 1976

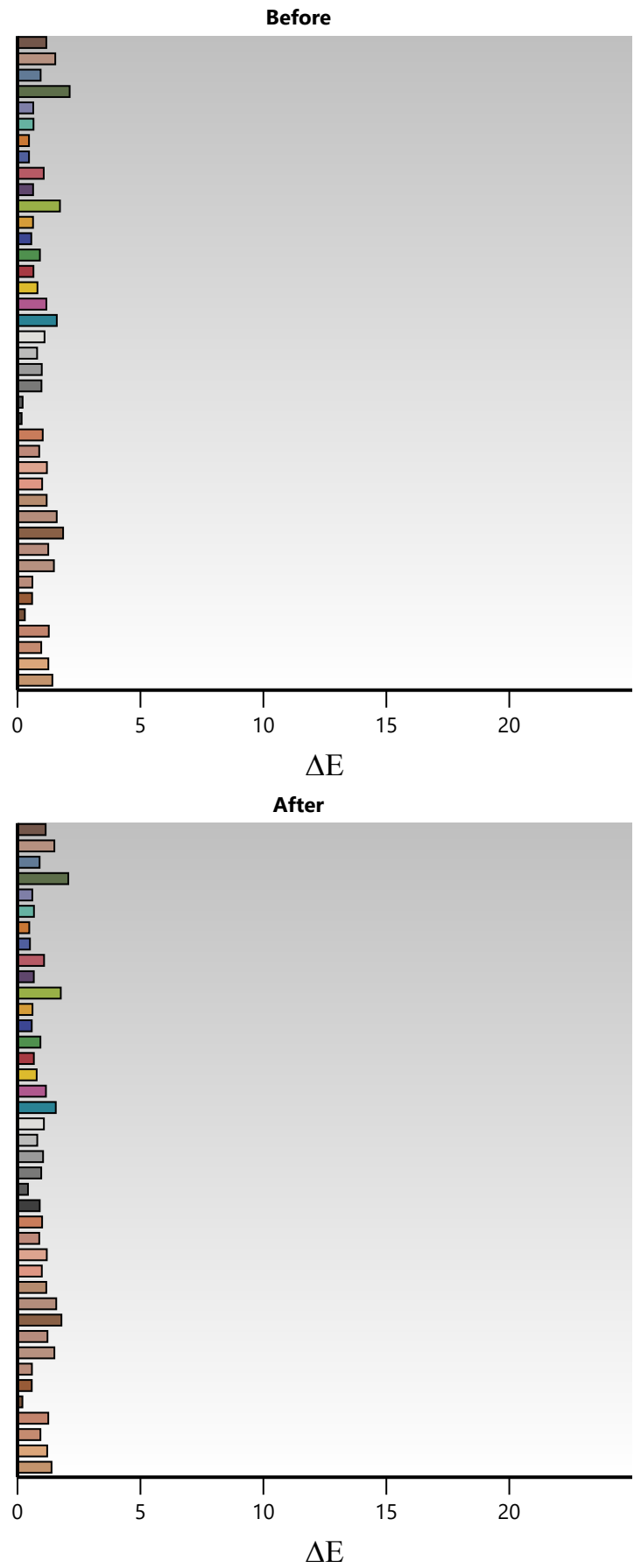


## ColorChecker

The ColorChecker evaluates the real-world color performance of the display by measuring the accuracy of ordinary colors found in the natural world. It includes 24 natural colors plus 16 extra colors that sample a variety of human skin tones. These are important because human vision is especially sensitive to inaccurate skin tone reproduction.

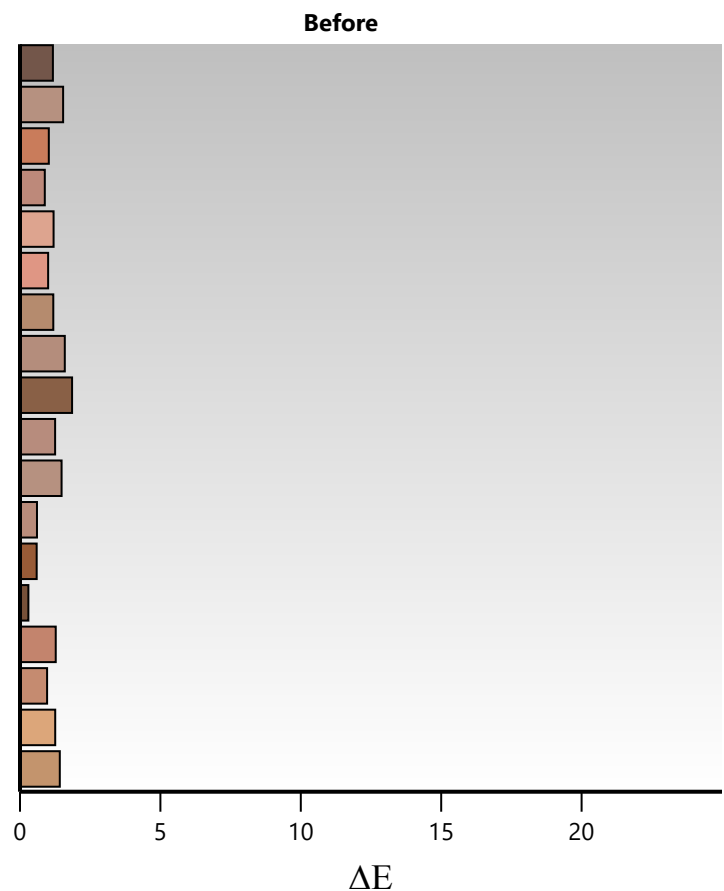


ColorChecker ΔE Performance

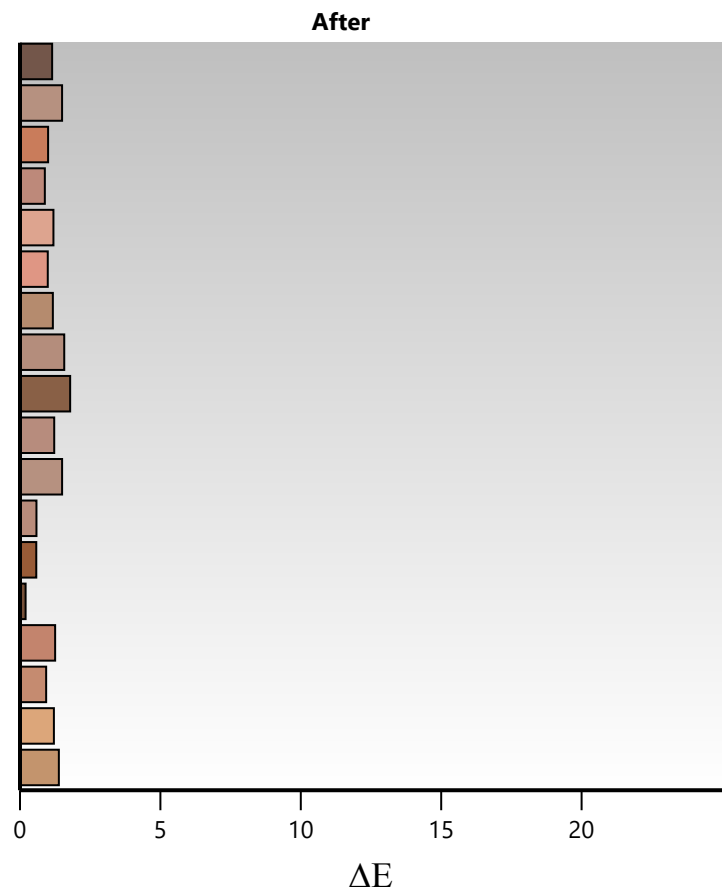


Color	ΔE	
	Before	After
Dark skin	1.2	1.2
Light skin	1.6	1.5
Blue sky	1.0	0.9
Foliage	2.2	2.1
Blue flower	0.7	0.6
Bluish green	0.7	0.7
Orange	0.5	0.5
Purplish blue	0.5	0.5
Moderate red	1.1	1.1
Purple	0.7	0.7
Yellow green	1.8	1.8
Orange yellow	0.7	0.6
Blue*	0.6	0.6
Green*	0.9	1.0
Red*	0.7	0.7
Yellow*	0.8	0.8
Magenta*	1.2	1.2
Cyan*	1.6	1.6
White*	1.1	1.1
Neutral 8	0.8	0.8
Neutral 6.5	1.0	1.1
Neutral 5	1.0	1.0
Neutral 3.5	0.2	0.5
Black	0.2	0.9
D7	1.1	1.0
D8	0.9	0.9
E7	1.2	1.2
E8	1.0	1.0
F7	1.2	1.2
F8	1.6	1.6
G7	1.9	1.8
G8	1.3	1.3
H7	1.5	1.5
H8	0.6	0.6
I7	0.6	0.6
I8	0.3	0.2
J7	1.3	1.3
J8	1.0	1.0
CP-Light	1.3	1.2
CP-Dark	1.5	1.4
Mean	1.0	1.0

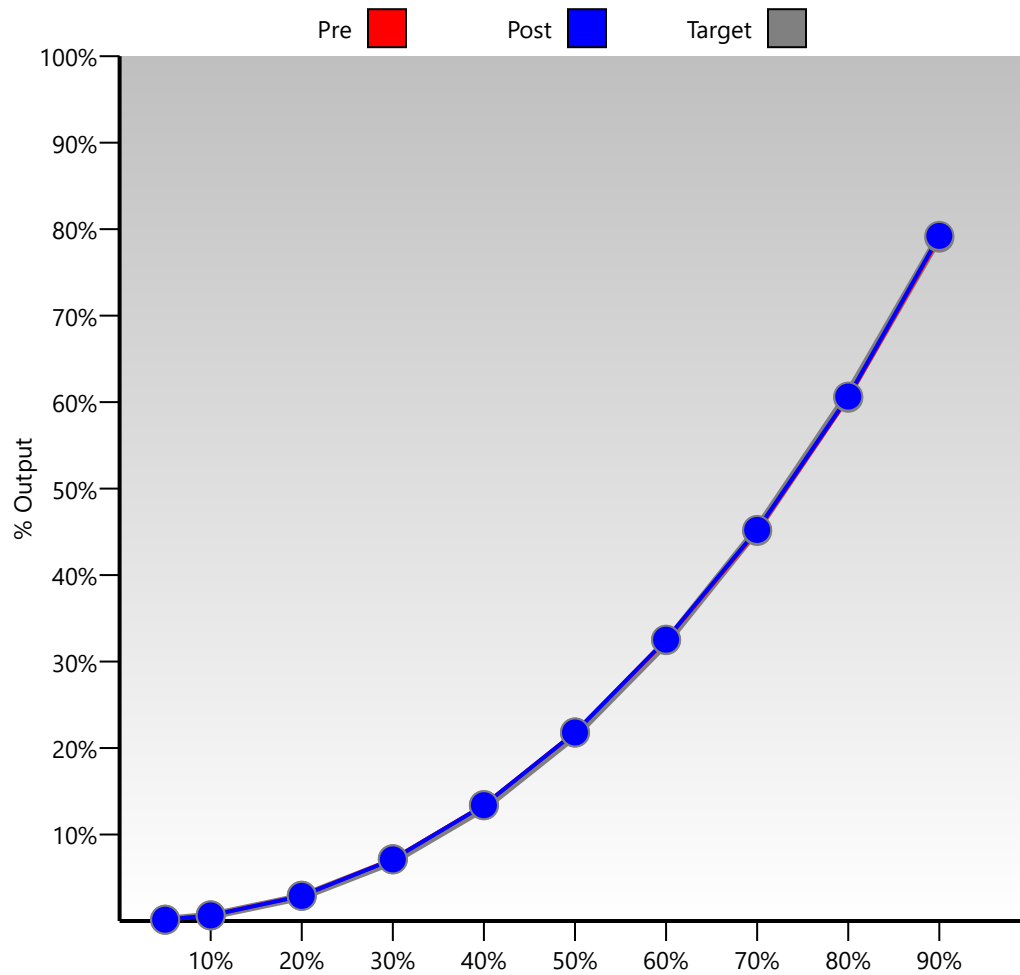
ColorChecker Skin Tones  $\Delta E$  Performance



Color	$\Delta E$	
	Before	After
Dark skin	1.2	1.2
Light skin	1.6	1.5
D7	1.1	1.0
D8	0.9	0.9
E7	1.2	1.2
E8	1.0	1.0
F7	1.2	1.2
F8	1.6	1.6
G7	1.9	1.8
G8	1.3	1.3
H7	1.5	1.5
H8	0.6	0.6
I7	0.6	0.6
I8	0.3	0.2
J7	1.3	1.3
J8	1.0	1.0
CP-Light	1.3	1.2
CP-Dark	1.5	1.4
Mean	1.2	1.2



## Gamma Output



	Before			After		
	Output	Gamma	Video	Output	Gamma	Video
<b>0%</b>			0.0092			0.0092
<b>5%</b>	0.15 (0.1%)	2.18		0.15 (0.2%)	2.17	
<b>10%</b>	0.67 (0.6%)	2.19		0.66 (0.6%)	2.19	
<b>20%</b>	3.02 (2.9%)	2.20		2.97 (2.9%)	2.20	
<b>30%</b>	7.39 (7.2%)	2.19		7.29 (7.1%)	2.19	
<b>40%</b>	13.84 (13.4%)	2.19		13.70 (13.4%)	2.19	
<b>50%</b>	22.51 (21.8%)	2.20		22.30 (21.8%)	2.20	
<b>60%</b>	33.56 (32.5%)	2.20		33.28 (32.5%)	2.20	
<b>70%</b>	46.59 (45.1%)	2.23		46.27 (45.2%)	2.23	
<b>80%</b>	62.51 (60.5%)	2.25		62.05 (60.6%)	2.24	
<b>90%</b>	81.63 (79.0%)	2.23		81.06 (79.2%)	2.21	
<b>100%</b>	103.31 (100.0%)	0	103.3	102.31 (100.0%)	0	102.3
<b>Mean: 2.21</b>				<b>2.20</b>		

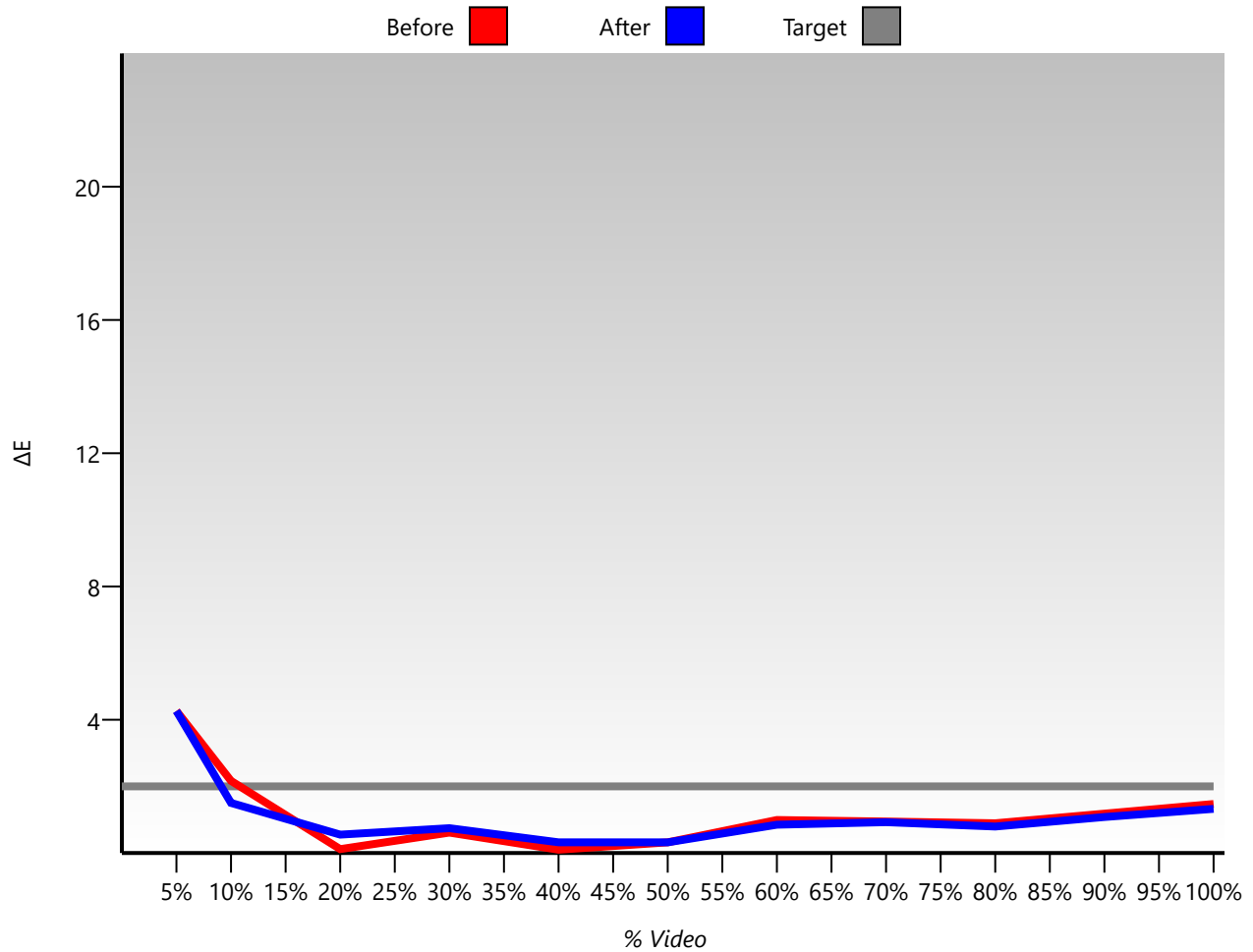
Contrast: 11214

11106



## Grayscale $\Delta E$ Chart

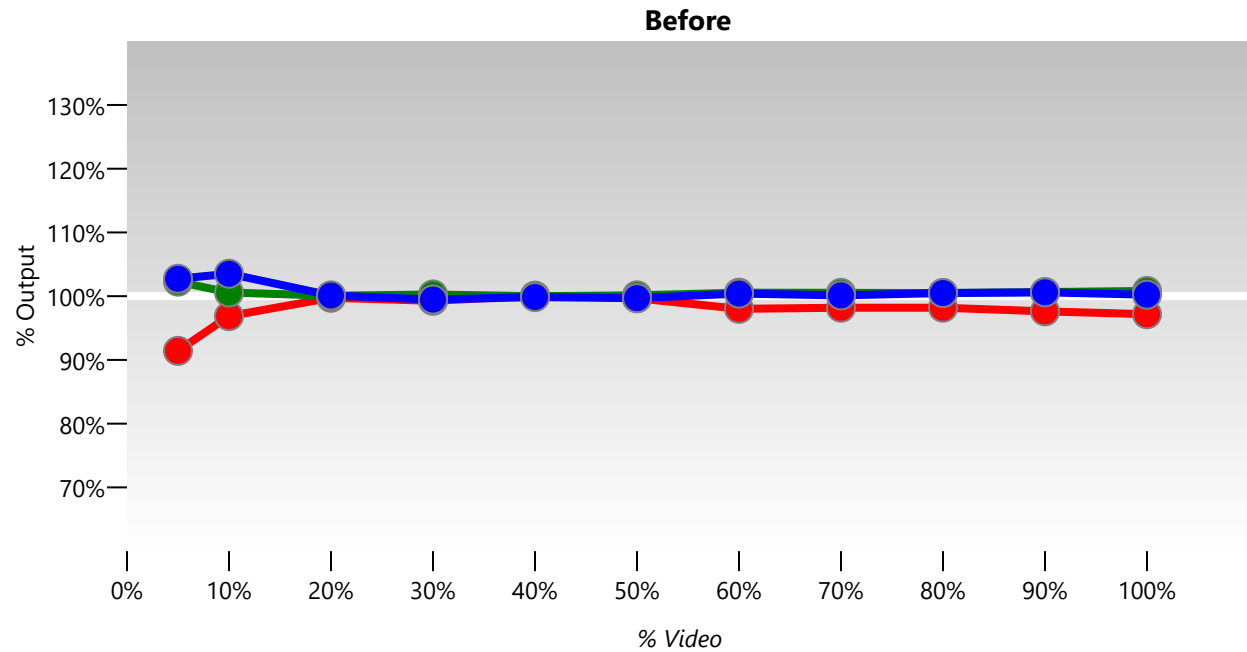
This chart displays the color of white across the entire grayscale in raw xy data and Delta-E. White is defined as x0.3127, y0.3290. Delta E (dE or  $\Delta E$ ) measures deviation from a color standard. The smaller the number, the less the deviation from the standard and the more accurate the color. Ideally,  $\Delta E$  for white should not rise above 2.



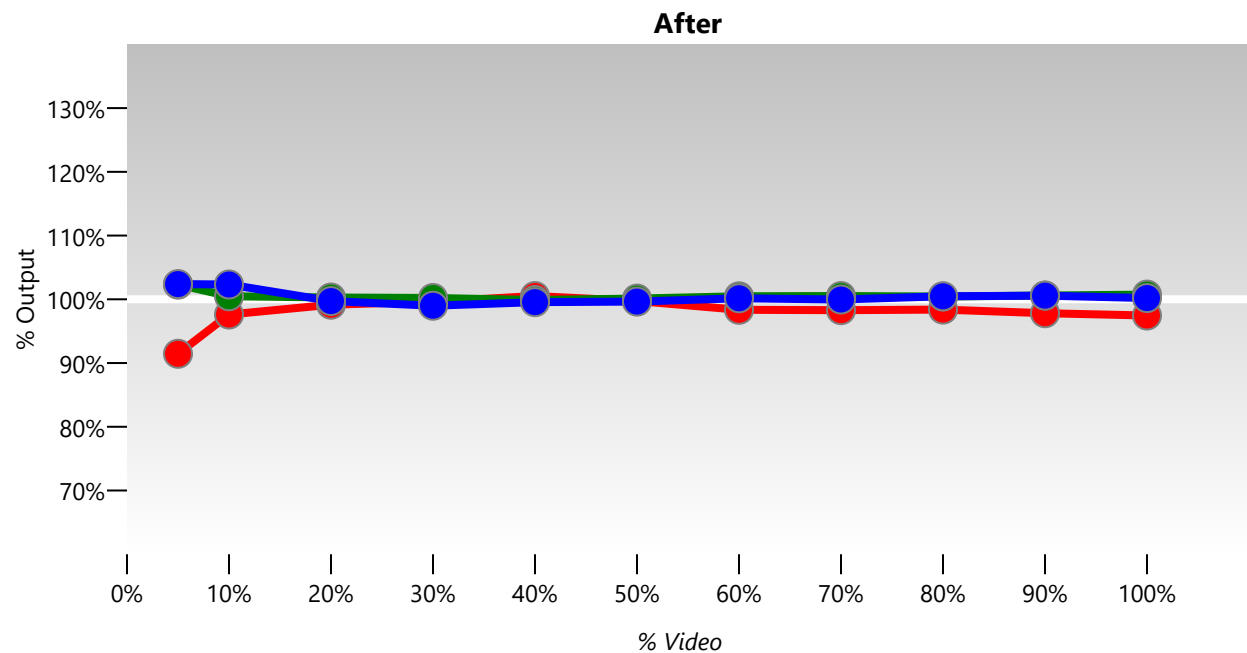
	Before			After		
	x, y	$\Delta E$	CCT	x, y	$\Delta E$	CCT
5%	0.305, 0.329	4.3	6,945	0.305, 0.329	4.3	6,928
10%	0.308, 0.326	2.2	6,777	0.310, 0.327	1.5	6,694
20%	0.312, 0.329	0.1	6,517	0.312, 0.330	0.6	6,522
30%	0.313, 0.330	0.6	6,507	0.313, 0.330	0.7	6,473
40%	0.313, 0.329	0.1	6,494	0.313, 0.329	0.3	6,466
50%	0.313, 0.329	0.3	6,502	0.313, 0.330	0.3	6,498
60%	0.311, 0.329	1.0	6,593	0.311, 0.329	0.8	6,570
70%	0.311, 0.329	0.9	6,575	0.312, 0.330	0.9	6,564
80%	0.311, 0.329	0.9	6,591	0.311, 0.329	0.8	6,583
90%	0.311, 0.329	1.2	6,617	0.311, 0.329	1.1	6,608
100%	0.311, 0.330	1.5	6,617	0.311, 0.330	1.3	6,604
Mean:		1.2	6,612		1.2	6,592

## RGB Line Chart

This chart also displays gray scale performance, but breaks out the contributions of red, green, and blue. Ideally, all three colors should be within  $\pm 4\%$  from 100% across the entire range.



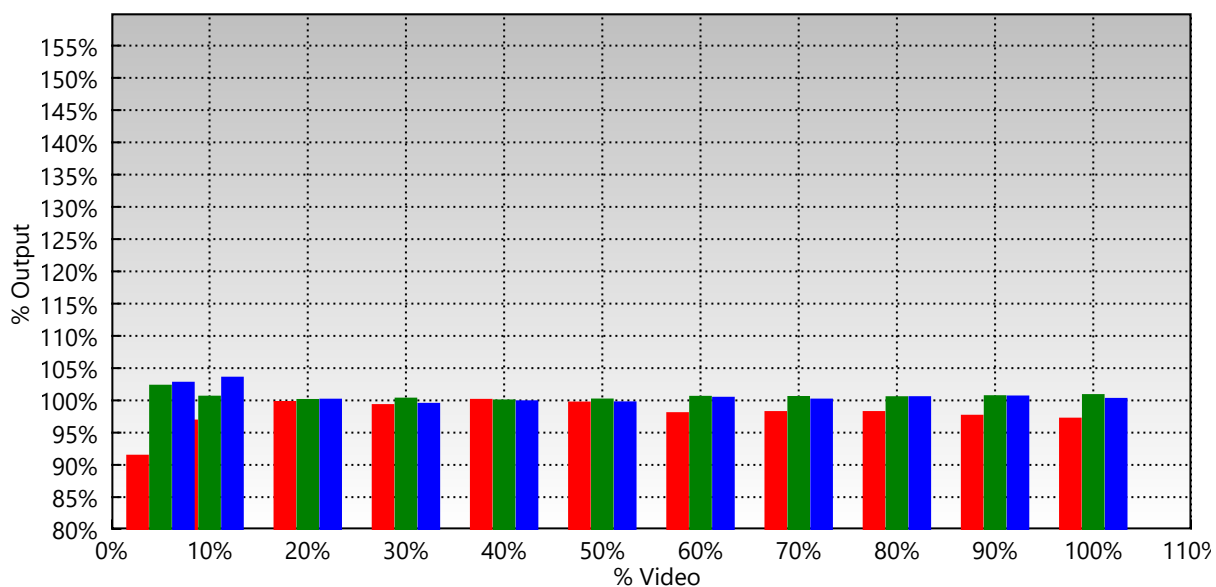
	5%	10%	20%	30%	40%	50%	60%	70%	80%	90%	100%	Mean
<b>R</b>	91.4%	96.9%	99.8%	99.3%	100.1%	99.7%	98.0%	98.2%	98.2%	97.6%	97.2%	97.8%
<b>G</b>	102.3%	100.6%	100.1%	100.3%	100.0%	100.1%	100.5%	100.5%	100.5%	100.6%	100.8%	100.7%
<b>B</b>	102.7%	103.5%	100.1%	99.5%	99.9%	99.7%	100.4%	100.1%	100.5%	100.6%	100.2%	100.7%



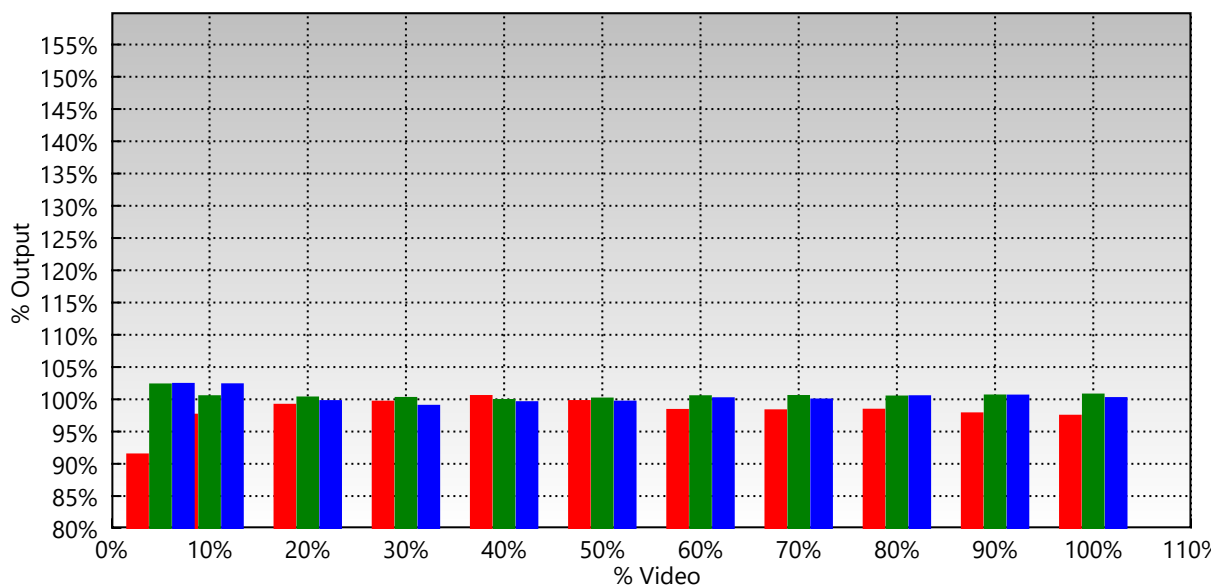
	5%	10%	20%	30%	40%	50%	60%	70%	80%	90%	100%	Mean
<b>R</b>	91.5%	97.6%	99.1%	99.6%	100.5%	99.7%	98.4%	98.3%	98.4%	97.8%	97.5%	98.0%
<b>G</b>	102.3%	100.5%	100.3%	100.2%	99.9%	100.1%	100.5%	100.5%	100.4%	100.6%	100.7%	100.4%
<b>B</b>	102.4%	102.3%	99.7%	99.0%	99.6%	99.6%	100.2%	100.0%	100.5%	100.6%	100.2%	100.4%

## RGB Bar Chart

This chart also displays gray scale performance, but breaks out the contributions of red, green, and blue. Ideally, all three colors should equal at 100% + - 4% across the entire range.



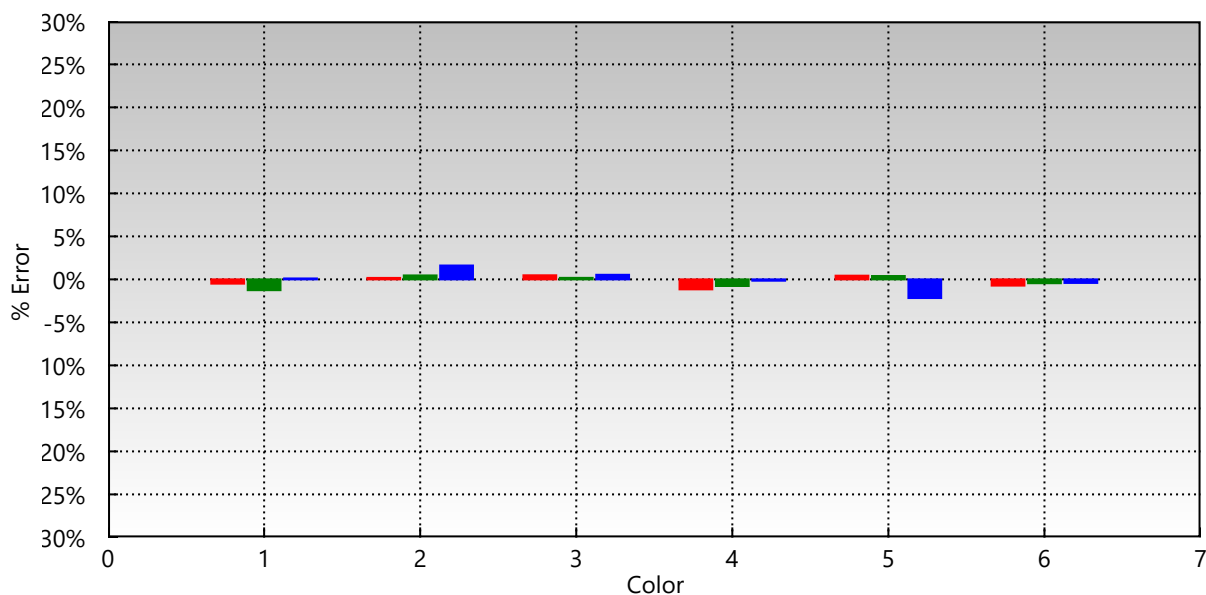
	5%	10%	20%	30%	40%	50%	60%	70%	80%	90%	100%	Mean
<b>R</b>	91.4%	96.9%	99.8%	99.3%	100.1%	99.7%	98.0%	98.2%	98.2%	97.6%	97.2%	97.8%
<b>G</b>	102.3%	100.6%	100.1%	100.3%	100.0%	100.1%	100.5%	100.5%	100.5%	100.6%	100.8%	100.7%
<b>B</b>	102.7%	103.5%	100.1%	99.5%	99.9%	99.7%	100.4%	100.1%	100.5%	100.6%	100.2%	100.7%



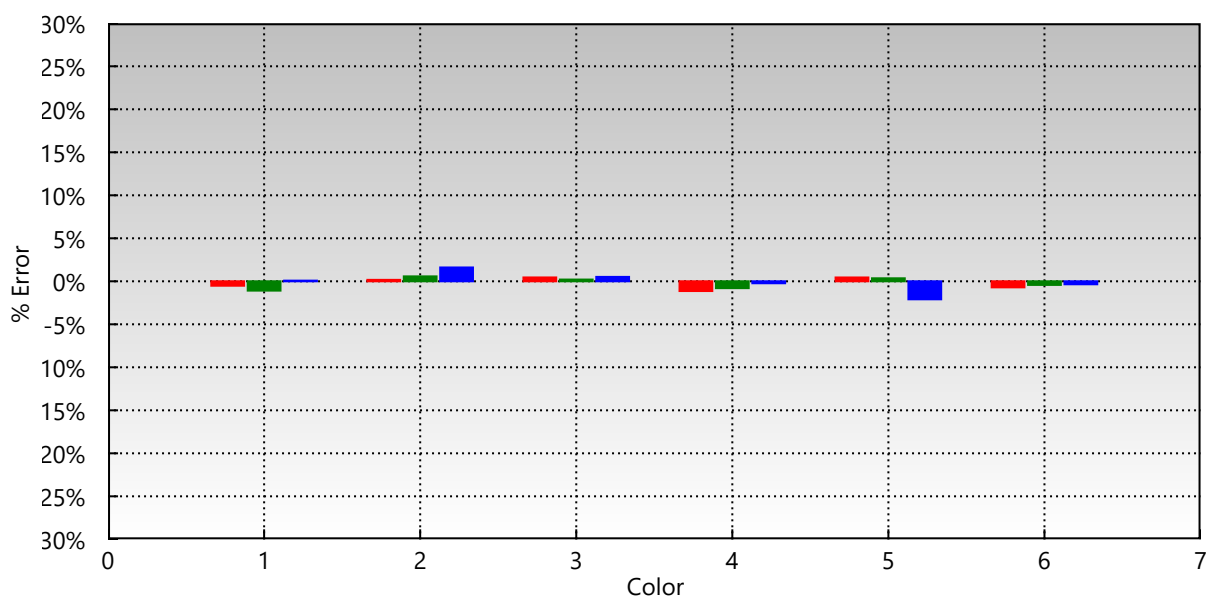
	5%	10%	20%	30%	40%	50%	60%	70%	80%	90%	100%	Mean
<b>R</b>	91.5%	97.6%	99.1%	99.6%	100.5%	99.7%	98.4%	98.3%	98.4%	97.8%	97.5%	98.0%
<b>G</b>	102.3%	100.5%	100.3%	100.2%	99.9%	100.1%	100.5%	100.5%	100.4%	100.6%	100.7%	100.4%
<b>B</b>	102.4%	102.3%	99.7%	99.0%	99.6%	99.6%	100.2%	100.0%	100.5%	100.6%	100.2%	100.4%

## Primary/Secondary Colors Hue, Saturation, and Lightness Error

These charts display the before/after color errors of the primary/secondary colors in terms of the three visible components of color: Hue, Saturation, and Lightness (HSL). Ideally, all primary and secondary colors should have no more than 2% error in any component.



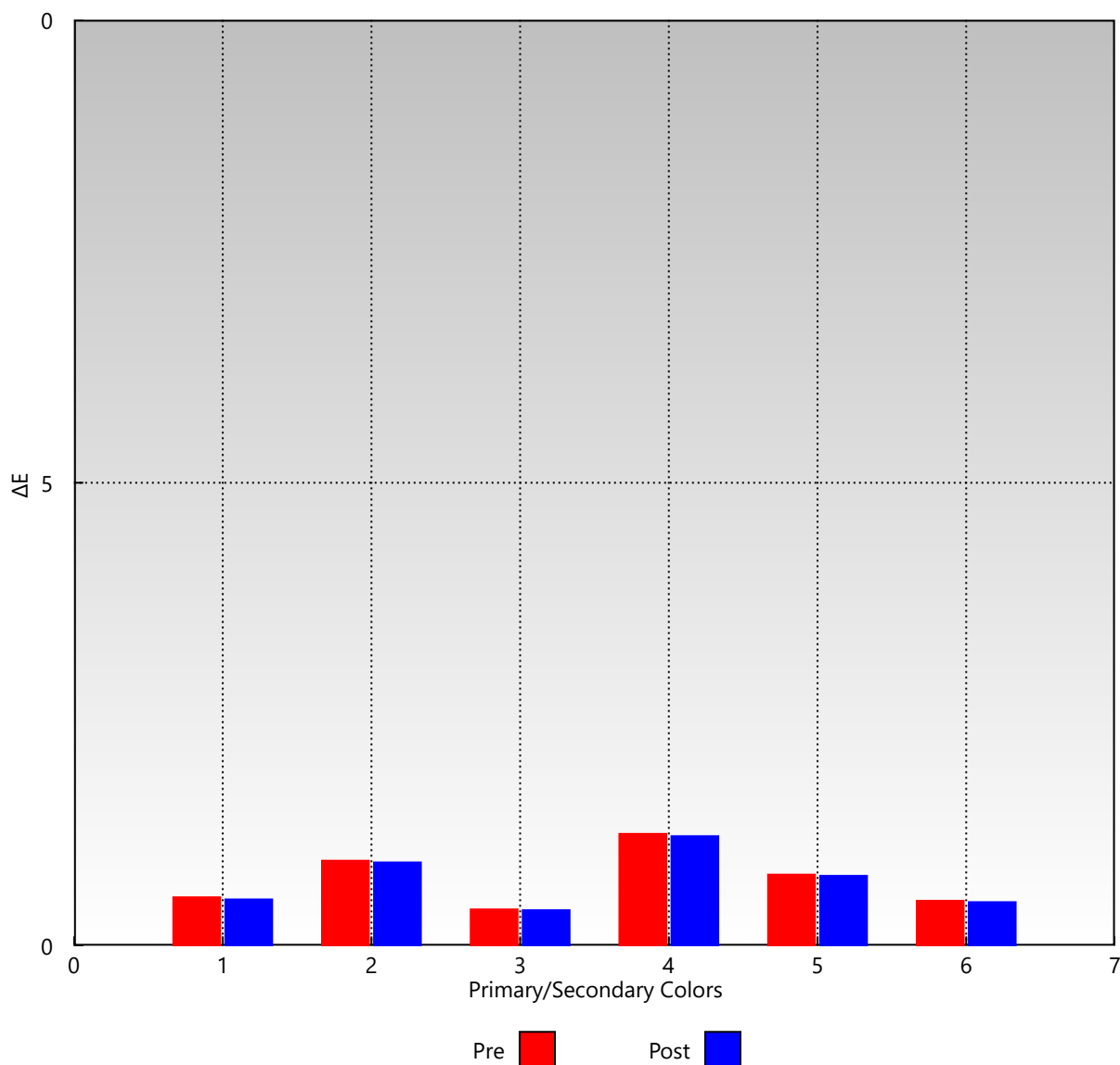
	Red	Green	Blue	Yellow	Cyan	Magenta
Lightness	-0.5%	0.2%	0.5%	-1.2%	0.4%	-0.7%
Saturation	-1.3%	0.5%	0.2%	-0.8%	0.4%	-0.4%
Hue	0.1%	1.6%	0.5%	-0.2%	-2.2%	-0.4%



	Red	Green	Blue	Yellow	Cyan	Magenta
Lightness	-0.5%	0.2%	0.4%	-1.1%	0.4%	-0.7%
Saturation	-1.1%	0.6%	0.2%	-0.8%	0.3%	-0.4%
Hue	0.1%	1.6%	0.5%	-0.2%	-2.1%	-0.3%

## Primary/Secondary Colors dE Performance

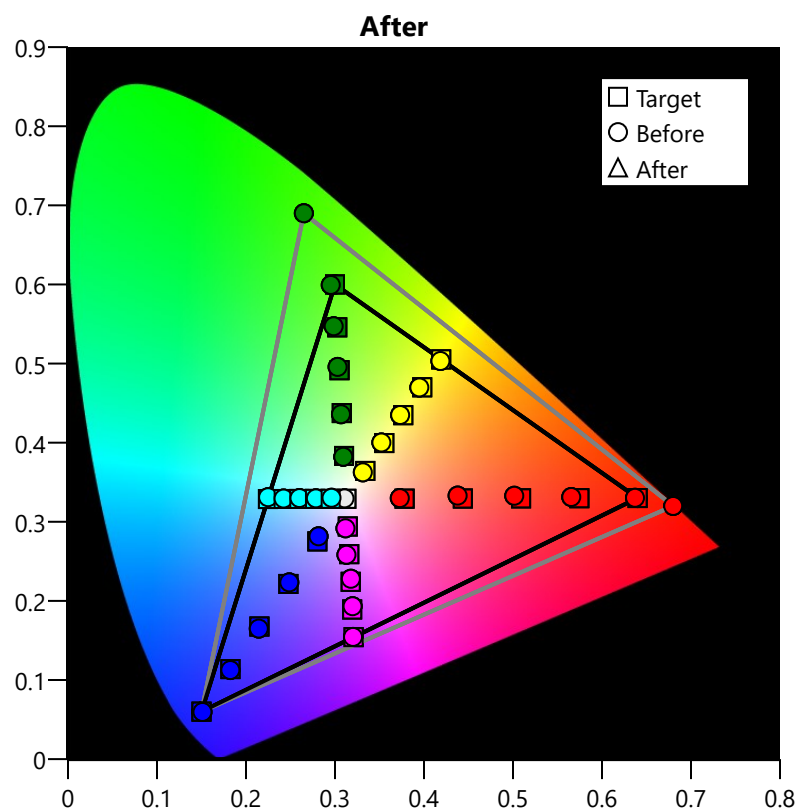
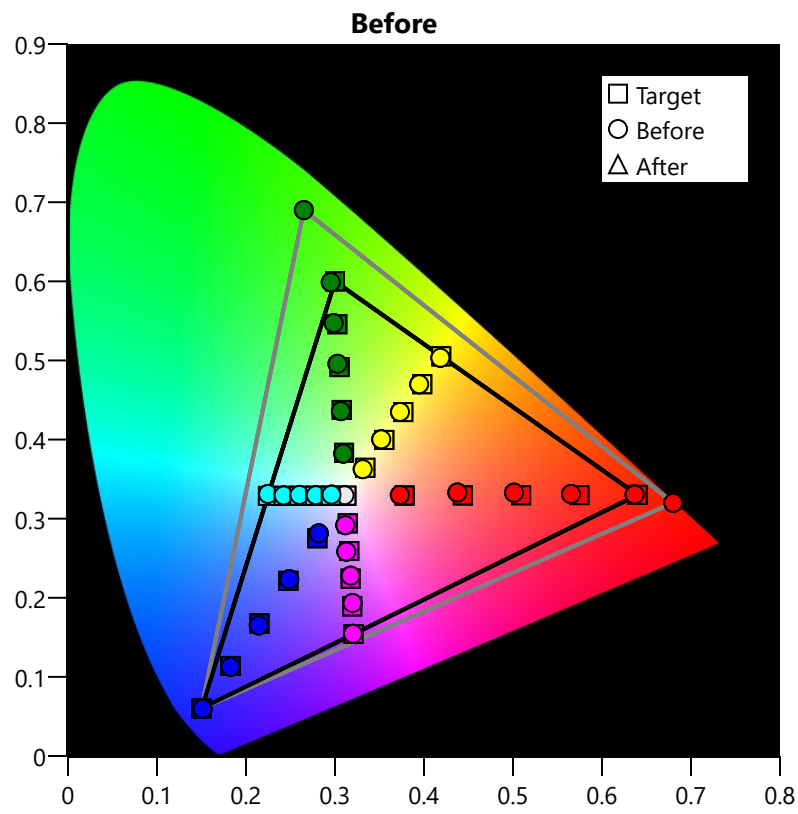
The data below shows the display's ability to accurately reproduce color as defined by the selected color difference model in  $\Delta E$  units. CIE94 or CIEDE2000 should be 1.5 or less.



	Reference	Before		After	
	xyY	xyY	$\Delta E$	xyY	$\Delta E$
Red	0.6400, 0.3300, 0.2127	0.6367, 0.3304, 0.2103	0.5	0.6371, 0.3303, 0.2102	0.5
Green	0.3000, 0.6000, 0.7152	0.2953, 0.5989, 0.7182	0.9	0.2953, 0.5994, 0.7182	0.9
Blue	0.1500, 0.0600, 0.0722	0.1512, 0.0596, 0.0729	0.4	0.1511, 0.0596, 0.0728	0.4
Yellow	0.4193, 0.5052, 0.9278	0.4184, 0.5034, 0.9004	1.2	0.4185, 0.5032, 0.9010	1.2
Cyan	0.2247, 0.3288, 0.7873	0.2248, 0.3311, 0.7960	0.8	0.2248, 0.3311, 0.7963	0.8
Magenta	0.3209, 0.1542, 0.2848	0.3201, 0.1544, 0.2800	0.5	0.3203, 0.1544, 0.2801	0.5
White	0.3127, 0.3290, 1.0000	0.3107, 0.3296, 102.8010	1.4	0.3107, 0.3296, 102.5935	1.4
		Mean: 0.8		Mean: 0.8	

## Color Saturations

This shows the ability of the display to reproduce color accurately throughout the entire gamut, rather than just at the gamut boundary.



Saturations  $\Delta E$

